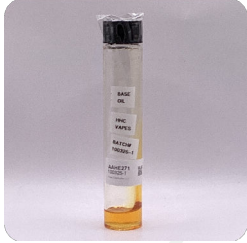




Certificate of Analysis
Compliance Test

Client Information:

Power Distribution LLC 333 New Road Unit 5 Parsippany, NJ 07054 Order # POW251024-100001 Order Date: 2025-10-24 Sample # AAHE271	Batch # 100325-1 Batch Date: 2025-10-03 Extracted From: hemp	Test Reg State: Oregon	Sampling Date: 2025-10-28 Lab Batch Date: 2025-10-28 Completion Date: 2025-10-31	Initial Gross Weight: 18.300 g Net Weight: 1.000 g	Number of Units: 1 Net Weight per Unit: 1000.000 mg
--	--	------------------------	--	---	--



Product Image

HHCP
Tested

✓ **HHC Summary**

Total HHC 829.829mg 82.983%	(9R)-HHC 626.000mg 62.6%
(9S)-HHC 203.000mg 20.3%	(±)-9β-hydroxy-HHC 0.829mg 0.0829%

HHCP

Specimen Weight: 508.090mg

Tested

SOP13.050 (LCMS)

Dilution Factor: 50000.000

Analyte	LOD (%)	LOQ (%)	Result (mg/g)	(%)	Analyte	LOD (%)	LOQ (%)	Result (mg/g)	(%)
(9R)-HHC	3.6600E-6	0.075	626	62.6	9(S)-HHCP	2.5500E-5	0.075	<LOQ	<LOQ
(9S)-HHC	6.6000E-6	0.075	203	20.3	CBC	2.760000E-5	0.075	<LOQ	<LOQ
(±)-9β-hydroxy-HHC	7.7800E-6	0.075	0.829	0.0829					
1(R)-H4-CBD	7.330000E-7	0.15	<LOQ	<LOQ	Delta-8 THC methyl ether	2.480000E-4	0.075	<LOQ	<LOQ
1(S)-H4-CBD	6.630000E-7	0.15	<LOQ	<LOQ	Delta-9 THC methyl ether	1.600000E-4	0.075	<LOQ	<LOQ
9(R)-HHCP	3.0900E-5	0.075	<LOQ	<LOQ	H2-CBD	1.440000E-7	0.075	<LOQ	<LOQ
					Total HHC		0.075	830	82.9829

Aixia Sun
Aixia Sun Lab Director/Principal Scientist
D.H.Sc., M.Sc., B.Sc., MT (AAB)

Definitions and Abbreviations used in this report: Total Active CBD = CBD + (CBD-A * 0.877), *Total CBDV = CBDV + (CBDVA * 0.867), Total Active THC = THCA-A * 0.877 + Delta 9 THC, Total THC = THCV + (THCVA * 0.87), CBC Total = (CBGA * 0.878) + CBG, CBN Total = (CBNA * 0.876) + CBN, Total CBC = CBC + (CBCA * 0.877), Total THC-O-Acetate = Delta 8 THC-O-Acetate + Delta 9 THC-O-Acetate, Total THCP = Delta 8-THCP + Delta 9-THCP, Total Cannabinoids = Total percentage of cannabinoids within the sample. (mg/ml) = Milligrams per Milliliter, LOQ = Limit of Quantitation, LOD = Limit of Detection, Dilution = Dilution Factor, (ppb) = Parts per Billion, (%) = Percent, (cfu/g) = Colony Forming Unit per Gram, (µg/g) = Microgram per Gram, (ppm) = Parts per Million, (ppm) = (µg/g), (aw) = Water Activity, (mg/Kg) = Milligram per Kilogram. ACS uses simple acceptance criteria. Passed - Analyte/microbe is not detected or is at the level below the action limit per OR rule OAR 333-007-0390, OAR 333-007-0400. Failed - Analyte/microbe is at the level that equal or above the action limit per OR rule OAR 333-007-0390, OAR 333-007-0400 Client supplied the net weight of mg The results apply to the sample as received.

This report shall not be reproduced, without written approval, from ACS Laboratory. The results of this report relate only to the material or product analyzed. Test results are confidential unless explicitly waived otherwise. ACS Laboratory is accredited to the ISO/IEC 17025:2017 Standard.

